

Nepal Centre for Disaster Management (NCDM)

## Capacity development of poor for reducing risks of disaster

*Dipendra Purush Dhakal*  
New Delhi, Nov 2007

## Poor peoples' priority on DRR

*building a culture of safety at local level*

- ♦ Use of Indigenous Knowledge
- ♦ Replication of low cost best practices
- ♦ Community Based DM Programs
- ♦ Trained local DM workers
- ♦ Reduction of livelihood vulnerabilities/ natural hazards helps eradicating income poverty

Nepal Centre for Disaster Management (NCDM)



## Pro-poor DM Policy

*right-based approach*

- ♦ Contributing poverty alleviation through effective DM
- ♦ Strengthening coping capacity of communities
- ♦ Improving disaster governance: national platforms
- ♦ Restoring livelihoods/attending marginalized underprivileged, and special need population
- ♦ Involving CBOs, civil society

Nepal Centre for Disaster Management (NCDM)



## Agriculture and food

*guidelines –support*

- ♦ Govt to support crop, livestock insurance practices
- ♦ Restrict settlements and agriculture in vulnerable locations
- ♦ Encourage cost effective, high yield agriculture productions
- ♦ Use local media in information dissemination

Nepal Centre for Disaster Management (NCDM)



## Education Sector

*strategies*

- ♦ Broaden coverage of DRR in formal and non-formal education
- ♦ Schools, teachers and students: change-agents to generate safer families
- ♦ Upkeep infrastructures in public schools
- ♦ Community level disaster preparedness courses

Nepal Centre for Disaster Management (NCDM)



## Health

*ensuring essential facilities*

- ♦ Emergency life-saving trainings
- ♦ Access, availability and affordability
- ♦ Attention towards neglected crisis e.g. unsafe motherhood: (14 % of pregnant women develop life-threatening complications in Nepal)

Nepal Centre for Disaster Management (NCDM)



## Fire resistant low cost technology for thatch roofing



½ inch mud plaster on the thatch roof covered by silpauline plastic



Nepal Centre for Disaster Management (NCDM)



## Shelters

*train masons on DRR techniques for retrofitting of stone masonry houses*



Holes at 3ft by 3ft  
Gabion wire: tied longitudinally, transversally and diagonally over the bamboo mesh

Nepal Centre for Disaster Management (NCDM)

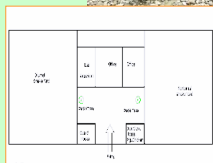


## Prediction of large earthquake

*using snake yard*

*During hibernation period:*  
snakes come out and die

*During non hibernation period:*  
snakes come out at day time in the nocturnal snake yard and at night in the diurnal snake yard

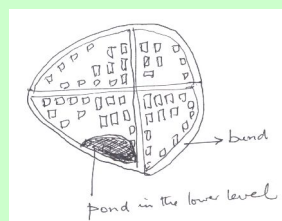


Nepal Centre for Disaster Management (NCDM)



## Flood

*Local solution proposed to safeguard the settlements*



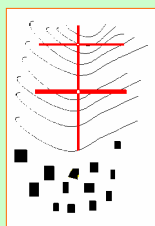
Bund for prevention of inundation

Nepal Centre for Disaster Management (NCDM)



## Landslide

*either relocate or have early warning system*



A siren, fixed near the settlement, is connected through electric circuit at vulnerable points along gullies

Occurrence of landslide breaks the circuit and siren blows

Nepal Centre for Disaster Management (NCDM)



## New Delhi Declaration 06

*prompt implementation needed*

- ◆ Despite strong poverty alleviation programs, often isolated from development mainstream, SAARC region lacks frameworks to integrate DRR and management with poverty and livelihood issues
- ◆ Necessity of strengthening existing institutions and networks in training and capacity building initiatives on specific disasters.

Nepal Centre for Disaster Management (NCDM)

